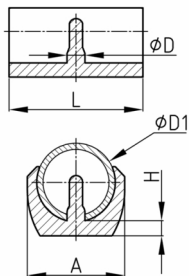


Product Group KSG

Clamping shell glides made of PE

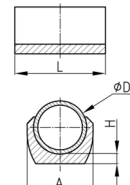
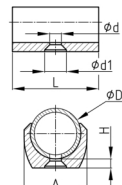
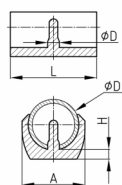


Standard Colours

- black RAL 9005

Material

- Polyethylene (PE)



• *) = Attention, renaming of article numbers! KSG8 to KSG8OZ, KSG10 to KSG10OZ, KSG16PE to KSG16 and KSG16 to KSG16PA.

• B = with drilling

• o.Z. = without pin

• PA = made of polyamide

• Items without spigots or holes may slip after installation due to lack of fixation on the tube.

Order Number	A	D	D1	d	d1	H	L
	mm	mm	mm	mm	mm	mm	mm
KSG 8 o. Z. *	17		8			4	24
KSG 10 o. Z. *	19,5		10			4,5	30
KSG 10 B	13		10	4,3	8	4	22
KSG 12 B	15		12	4,3	8	4	22
KSG 14	20	5	14			3,5	26
KSG 16 *	20	5	15-17			3,5	28
KSG 16 o.Z.	20		15-17			3,5	28
KSG 16 PA *	20	5	16-17			3,5	28
KSG 20	23,5	5,7	18-20			4,5	30
KSG 20 o.Z.	23,5		18-20			4,5	30
KSG 22	25,5	5,7	20-22			5	30
KSG 22 o.Z.	25,5		20-22			5	30
KSG 25	28	5,7	23-25			5	42
KSG 30	32,5	5,7	28-30			5	45
KSG 25 o.Z.	28		23-25			5	42