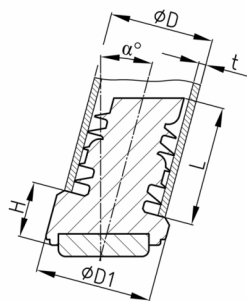


### Product Group RSUG

Round inclined lamella glides made of PA 6 with PTFE sliding surface for furniture and frames

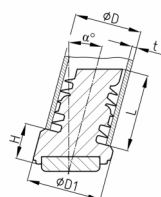


#### Standard Colours

- black RAL 9005

#### Material

- Base body: Polyamide (PA 6)
- Slide base: Polytetrafluorethylene (PTFE)



#### Product information

- Very good noise damping due to plastic/rubber buffers in the sliding insert.
- Minimum ground friction due to Teflon® sliding support

Order Number	$\alpha$ °	D mm	D1 mm	H mm	L ca. mm	t mm
RSUG 25x1,5-2 / 18°	18	25	26,5	20	20	1,5-2