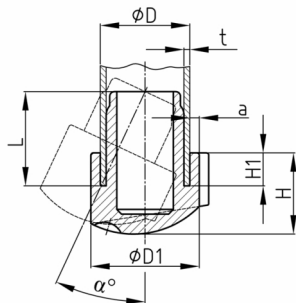


### Product Group SRS

Inclined lamella glides made of PE for round tubes with variable set-up angle

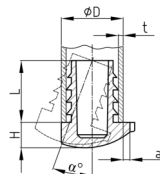
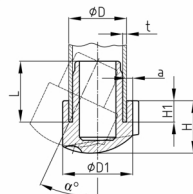


#### Standard Colours

- black RAL 9005
- uncoloured
- signal white RAL 9003

#### Material

- Polyethylene (PE)



- SRSL with ribs (tube flushes with foot, not enclosed)

#### Product options on inquiry

- Special colours (colours, minimum quantities, set-up costs, pricing and surcharges)

Order Number	$\alpha$ °	a mm	D mm	D1 mm	H mm	H1 mm	L mm	t mm
SRS 19x1,5 /0-30°/20	0-30	2-3	19	23,5	16,5	7	20	1,5
SRS 20x1,5 /0-30°/20	0-30	2-3	20	24,5	16,5	7	20	1,5
SRSL 20x1,3-2,2 /0-30°/20	0-30	2-3	20		8		20	1,3-2,2
SRS 20x2 /0-30°/20	0-30	2-3	20	24,5	16,5	7	20	2
SRS 22x1,5 /0-30°/20	0-30	2-3	22	26,5	17,5	7	20	1,5
SRS 22x2 /0-30°/20	0-30	2-3	22	26,5	18	7	20	2
SRS 25x1,5 /0-30°/20	0-30	2-3	25	29,5	18	7	20	1,5
SRS 25x2 /0-30°/20	0-30	2-3	25	29,5	18	7	20	2