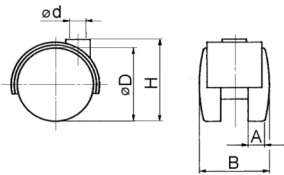


Product Group R 21

Twin wheel castors with mudguard made of polyamide

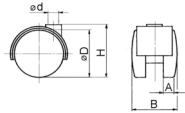


Standard Colours

- black

Material

- Polyamide (PA)



Order Number	D	d	H	B	A	Weight	Load capacity
	mm	mm	mm	mm	mm	kg	kg
R2113	40	8	43	37	8	0,025	30
R2115	50	8	53	46	10	0,061	50