

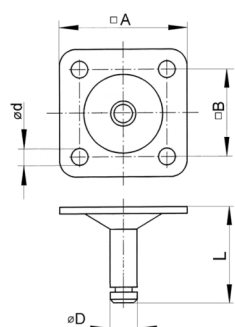


Walter Bethke GmbH & Co. KG

Technische Kunststoff - und Hybridprodukte

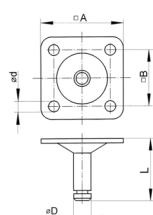
Product Group R 23-4

Screw-on plates for group R21 and R22



Material

- Zinc plated steel



| Order Number | A | B | d | D | L | Fit for group |
|--------------|----|----|----|----|----|---------------|
| | mm | mm | mm | mm | mm | |
| R23191 | 42 | 32 | 8 | 8 | 29 | R2113 |
| R2322 | 42 | 32 | 8 | 8 | 35 | R2115, R2215 |