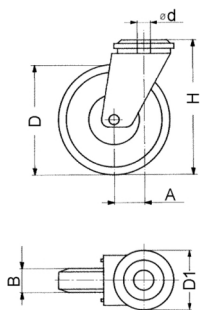


Product Group R 34-1

Swivel castors with bolt hole and thread guard, wheel/axle bolted, plain bearing

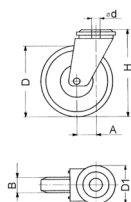


Standard Colours

- grey / core black

Material

- Rim: Polyamide (PA)
- Housing: zinc-plated steel
- Tyre: elastic thermoplast



Order Number	A	B	d	D	D1	H	Weight	Load capacity
	mm	mm	mm	mm	mm	mm	kg	kg
R3403	37	24	10	75	48	98	0,3	55
R3405	38	24	10	100	48	120	0,37	55