

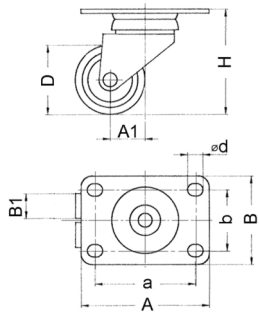


Walter Bethke GmbH & Co. KG

Technische Kunststoff - und Hybridprodukte

Product Group R 29-1

Swivel twin wheel castors with top plate, plain bearing

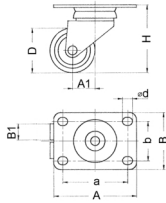


Standard Colours

- grey / core black

Material

- Rim: Polyamide (PA)
- Housing: zinc-plated steel
- Tyre: elastic thermoplast



Order Number	A	B	a	b	A1	B1	d	D	H	Weight	Load capacity
	mm	mm	mm	mm	mm	mm	mm	mm	mm	kg	kg
R2901	92	64	72	44,5	24	18	8	50	76	0,36	70