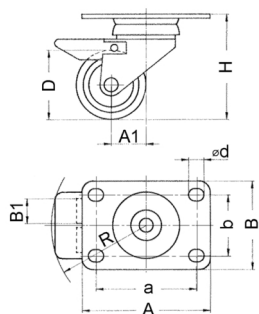


Product Group R 29-2

Swivel twin wheel castors with top plate and wheel brake, plain bearing

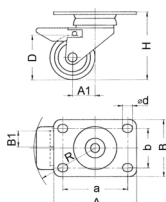


Standard Colours

- grey / core black

Material

- Rim: Polyamide (PA)
- Housing: zinc-plated steel
- Tyre: elastic thermoplast



Order Number	A	B	a	b	A1	B1	d	D	H	R	Load capacity	Weight
	mm	mm	mm	mm	mm	mm	mm	mm	mm	mm	kg	kg
R2971	92	64	72	44,5	24	18	8	50	76	72	70	0,38