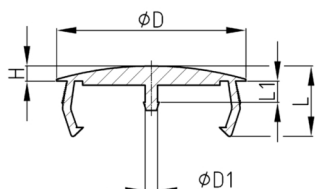


Product Group LBS2

Round covering plugs made of PA 6 for different thicknesses of wall and central fit

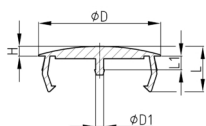


Standard Colours

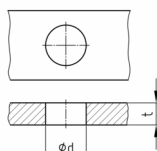
- black RAL 9005

Material

- Polyamide 6 (PA 6)



Blech, Platte / Sheet, Panel



Product information

- For closure of unused bores or assembly holes in sheets, panels and housings
- 2,5 mm overlap with central fit
- Simple, fast and sure
- Free of halogen
- Central spigot for optional additional locking
- Only one component for different wall thicknesses

Product options on inquiry

- Special colours (colours, minimum quantities, set-up costs, pricing and surcharges)
- With your engraved company logo (tooling costs, minimum quantities, set-up costs)
- With your tampon printed company logo (set-up costs, minimum quantities, printing costs)

Order Number	d	D	D1	H	L	L1	t
	mm	mm	mm	mm	mm	mm	mm
LBS 2 35/40	35	40	3	3,7	18,5	5	0,5-5
LBS 2 40/45	40	45	3	3,7	18,5	5	0,5-5
LBS 2 45/50	45	50	3	3,7	18,5	5	0,5-5