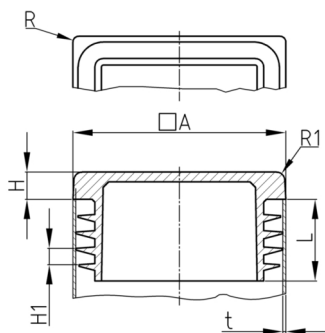


Product Group VL/Q

Lamella plugs made of polyethylene for square tubes

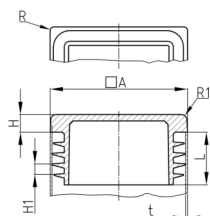
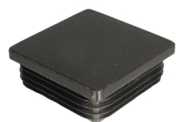


Standard Colours

- black RAL 9005
- signal white RAL 9003
- traffic grey A RAL 7042

Material

- Polyethylene (PE)



Product information

- Lamellar plugs without specification of the pipe wall thickness are generally suitable for pipe wall thicknesses 1.5 - 2 mm. Please indicate the pipe wall thickness when ordering.
- The plugs are intended for use in pipes or equivalent bores with free passage corresponding to the clear nominal width of at least shaft length.
- For technical production reasons, a residual sprue may exceed the shaft length.
- Material and design of shafts guaranteed stop against drop out and easy assembling.
- For use as a glides (conditional shear strength) and to attain an easy assembling in tubes with larger wall thickness, it is recommended to chamfer the inside diameter of the pipe (approx. 0.3 - 0.5 x 60°).
- Depending on the selected article, the surface finish can vary between polished and eroded.
- The ribs are circularly closed or interrupted.
- The ribs are not suitable for sealing against fluids.
- The number of slats per plug varies between 2-4 slats.
- „+“ = differing standard colours possible
- Your searched size / design is not included? - Please ask our sales team!
- As a rule, odd outside pipe diameters rounded to 1/10 mm (as part of the article or order number) indicate that these sizes originate from or are common in the Imperial system.

Product options on inquiry

- Special colours (colours, minimum quantities, set-up costs, pricing and surcharges)
- With your engraved company logo (tooling costs, minimum quantities, set-up costs)
- With your tampon printed company logo (set-up costs, minimum quantities, printing costs)
- Most plugs can also be made of suitable harder TPE's (TPE= thermoplastic elastomer --> extended range of operating temperature, noise absorbing, non-skid).

Order Number	A	H	H1	L	R	R1	t
	mm	mm	mm	mm	mm	mm	mm
VL 12x12x0,5-2	12	4	3	11,5			0,5-2
VL 13x13x0,5-2	13	4	3	11,5			0,5-2
VL 15x15x0,8-2	15	3	3	11,5			0,8-2
VL 16x16x0,8-2	16	5	3	11,5			0,8-2
VL 18x18x0,8-2,5	18	5	3	11,5			0,8-2,5
VL 19,1x19,1x1,2-2,9	19,1	5	3	11,5			1,2-2,9
VL 20x20x0,8-3	20	5	3	11,5			0,8-3
VL 22x22x0,8-3(3,5)	22	5	3	11,5			1-3,5



Walter Bethke GmbH & Co. KG

Technische Kunststoff - und Hybridprodukte

Order Number	A	H	H1	L	R	R1	t
	mm	mm	mm	mm	mm		mm
VL 25x25x1-3	25	5	3	11,5			1-3
VL 25,4x25,4x1,2-3,2	25,4	5	3	11,5			1,2-3,2
VL 28x28x1-3	28	5	3	11,5			1-3
VL 30x30x1-2,5	30	5	3	11,5			1-2,5
VL 30x30x2,5-5	30	5	3	11,5			2,5-5
VL 32x32x1-3,5	32	5	3	11,5			1-3,5
VL 34x34x1-3	34	5	3	14,5			1-3
VL 35x35x 0,8-3	35	5	3	14,5			0,8-3
VL 35x35x3-5	35	5	3	14,5			3-5
VL 38x38x1-3,5	38	5	3	14,5			1-3,5
VL 40x40x1-3	40	5	3	14,5	2		1-3
VL 40x40x3-5	40	5	3	14,5	2		3-5
VL 45x45x1-3	45	5	3	14,5	2		1-3
VL 45x45x3-5	45	5	3	14,5	2		3-5
VL 48x48x2,5-4,5	48	5	3	14,5	2		2,5-4,5
VL 50x50x0,8-2,5	50	5	3	14,5	2,5		0,8-2,5
+ VL 50x50x2,6-4	50	6,5	6,5	24,5	2,5		2,6-4
VL 50x50x3-5	50	5	3	14,5	2,5		3-5
VL 50,8x50,8x1,2-3,2	50,8	5	3	14,5	2,5		1,2-3,2
VL 52x52x1,5-3,5	52	5	3	14,5	2,5		1,5-3,5
VL 55x55x2-4	55	5	3	14,5	2,5		2-4
VL 60x60x1,5-4	60	5	4,5	21	6		1,5-4
+ VL 60x60x2,6-4	60	6,5	6	17,5	5		2,6-4
VL 60x60x4-6	60	5	3	21	6		4-6
VL 65x65x2-4,5	65	5	3	21	6		2-4,5
VL 65x65x4-6,5 R12	65	5	4,5	21	12		4-6,5
+ VL 70x70x2-4	70	5	4	18,7	4		2-4
VL 70x70x2-4,5	70	5	5	18,7	6		2-4,5
+ VL 70x70x3,6-5	70	8	6	20	6		3,6-5
VL 75x75x2-4,5	75	6	4,5	21	6		2-4,5
VL 75x75x4-6,5 R12	75	6	4,5	21	12		4-6,5
VL 76,2x76,2x2,5-5	76,2	6	4,5	21	6		2,5-5
VL 80x80x2-4,5	80	6	4,5	21	6		2-4,5
VL 80x80x4-7	80	6	4,5	21	6		4-7
+ VL 80x80x2,9-5	80	8	4	24	5		2,9-5
VL 88,9x88,9x2-4	88,9	6	5	21	6		2-4
VL 90x90x3-5	90	6	4,5	21	6		3-5
VL 90x90x4,5-7x R12	90	6	4,5	21	12		4,5-7
VL 95x95x3,5-5,5	95	6	4	21	6		3,5-5,5
+ VL 100x100x1-4	100	7	7	24	7,5		1-4
+ VL 100x100x5-8	100	7	8,5	24	7,5		5-8
VL 101,6x101,6x2,5-5,5	101,6	6	5	24	6		2,5-5,5
VL110 x 110 x 2-3,5 R1	110	6	4,5	24,5	1	6	2-3,5
VL 110x110x3-5	110	6	4,5	24,5	6		3-5
VL 114,3x114,3x2,5-5,5	114,3	6	5	24	6		2,5-5,5
+ VL 120x120x2,5-5	120	5		25	7,5		2,5-5
VL 125x125x3-6	125	6	4,5	24,5	6		3-6



Walter Bethke GmbH & Co. KG

Technische Kunststoff - und Hybridprodukte

Order Number	A	H	H1	L	R	R1	t
	mm	mm	mm	mm	mm		mm
VL 140x140x4-7	140	6	6	35	12		4-7
+ VL 150x150x5-8	150	7	8	27	12		5-8
+ VL 150x150x10-12,5	150	7	8	27	12		10-12,5
+ VL 160 x 160 x 3-6	160	6	6	35	12		3-6
+ VL 180 x 180 x 3-6	180	6	6	35	12		3-6
+ VL 200 x 200 x 3-7	200	6	6	35	12		3-7