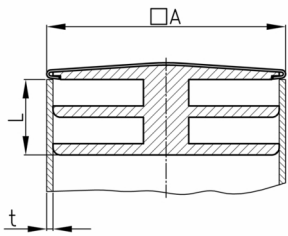


Product Group CQM

Sight plugs made of PE with chrome-/nickel-coloured metal cover for square tubes

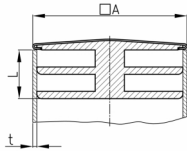
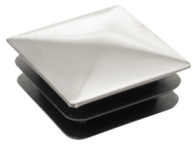


Standard Colours

- chrome-/ nickel coloured

Material

- Polyethylene (PE)



Product information

- Chrome-/nickel-coloured metal cover:
- The metal cover features normally has some play to the plug.
- The metal cover is conditionally scratch-resistant and is not considered to be high-gloss nickel-plated.
- The metal cover has limited corrosion resistance (outdoor application + humidity).
- As a rule, odd outside pipe diameters rounded to 1/10 mm (as part of the article or order number) indicate that these sizes originate from or are common in the Imperial system.
- *)= The plug can also be used from a wall thickness of 1 mm. We recommend checking this before installation.

| Order Number | A | L | t |
|--------------|----|----|--------|
| | mm | mm | mm |
| CQM 16 | 16 | 9 | 1,5(2) |
| CQM 18 | 18 | 9 | 1,5-2 |
| CQM 20 | 20 | 10 | 1,5-2 |
| CQM 25 | 25 | 10 | 1,5-2 |
| CQM 30 * | 30 | 10 | 1,5-2 |
| CQM 35 * | 35 | 12 | 1,5-2 |
| CQM 40 * | 40 | 12 | 1,5-2 |