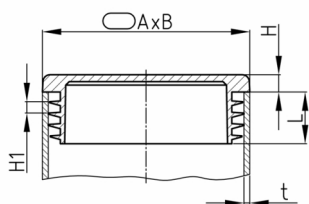


### Product Group OVL

Lamella plugs made of PE for flat oval tubes

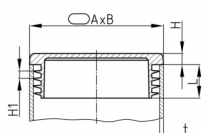


#### Standard Colours

- black RAL 9005
- signal white RAL 9003
- traffic grey A RAL 7042

#### Material

- Polyethylene (PE)



#### Product information

- The plugs are intended for use in pipes or equivalent bores with free passage corresponding to the clear nominal width of at least shaft length.
- For technical production reasons, a residual sprue may exceed the shaft length.
- Material and design of shafts guaranteed stop against drop out and easy assembling.
- For use as a glides (conditional shear strength) and to attain an easy assembling in tubes with larger wall thickness, it is recommended to chamfer the inside diameter of the pipe (approx. 0.3 - 0.5 x 60°).
- Version with felt, see product group OVLAF
- Depending on the selected article, the surface finish can vary between polished and eroded.
- The ribs are circularly closed or interrupted.
- They are not suitable for sealing against fluids.
- The number of slats per plug varies between 2-4 slats.
- \* = the article has a longitudinal distortion due to the material behaviour and geometry - well suited for gliders and base plugs. Alternative for use as cover plugs see group "VSFL".
- „+“ = differing standard colours possible
- Your searched size / design is not included? - Please ask our sales team!
- As a rule, odd outside pipe diameters rounded to 1/10 mm (as part of the article or order number) indicate that these sizes originate from or are common in the Imperial system.

#### Product options on inquiry

- Special colours (colours, minimum quantities, set-up costs, pricing and surcharges)
- With your engraved company logo (tooling costs, minimum quantities, set-up costs)
- With your tampon printed company logo (set-up costs, minimum quantities, printing costs)
- Most plugs can also be made of suitable harder TPE's (TPE= thermoplastic elastomer --> extended range of operating temperature, noise absorbing, non-skid).

Order Number	A	B	H	H1	L	t
	mm	mm	mm	mm	mm	mm
OVL 20x10x0,75-2	20	10	3	3	11,5	0,75-2
+ OVL 20x10x2	20	10	5,5	2,5	10	2
OVL 25x10x0,8-2	25	10	3	3	11,5	0,8-2
OVL 30x10x0,8-2	30	10	3	3	11,5	0,8-2
OVL 30x15x1-2,5	30	15	5	3	11,5	1-2,5
OVL 35x15x0,8-2,5	35	15	5,5	3,5	11,5	0,8-2,5
OVL 35x20x1-3	35	20	5	3	11,5	1-3



# Walter Bethke GmbH & Co. KG

Technische Kunststoff - und Hybridprodukte

Order Number	A	B	H	H1	L	t
	mm	mm	mm	mm	mm	mm
OVL 38,1x19,1x0,8-2	38,1	19,1	5	3	11,5	0,8-2
OVL 38x20x1-3	38	20	5	3	11,5	1-3
OVL 40x20x1-3	40	20	5	3	11,5	0,8-3
OVL 40x25x1-3	40	25	5	3	11,5	1-3
OVL 45x18x1,5-3	45	18	5	3	11,5	1,5-3
OVL 45x20x1,5-3	45	20	5	3	11,5	1,5-3
OVL 48x20x1-2,5	48	20	5	3	11,5	1-2,5
OVL 50x15x1-2,5 *	50	15	5	3	11,5	1-2,5
OVL 50x20x1-3	50	20	5	3	11,5	1-3
OVL 50x25x1-3	50	25	3	3	11,5	1-3
OVL 50x25x1-3 / 15	50	25	5	3	15	1-3
OVL 50x30x1-3	50	30	5	3	11,5	1-3
OVL 60x20x0,8-2,5	60	20	5	3	11,5	0,8-2,5
+ OVL 60x20x1-2	60	20	5	4	14	1-2
OVL 60x25x1,5-3	60	25	5	3	14,5	1,5-3
+ OVL 60x30x1-2	60	30	5	4,5	13	1-2
OVL 70x40x1-3	70	40	5	3	14,5	1-3
OVL 80x25x1,2-2,5	80	25	5	3	14,5	1,2-2,5
OVL 80x40x1,2-3	80	40	5	3	14,5	1,2-3