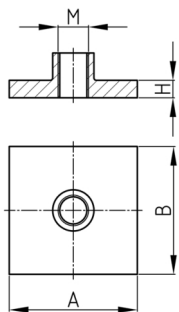


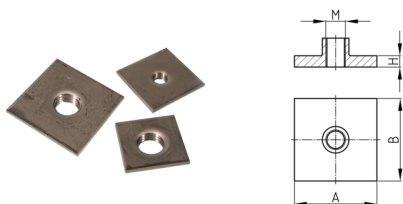
Product Group SPP

Welding plates made of stainless steel with thread, for welding to square tubes



Material

- AISI 304 (A2)



Product information

- The welding plates ensure that the tube is 100% tight after welding.
- The welding/end plates are available for both square and rectangular pipes.

Order Number	A	B	H	M
	mm	mm	mm	
SPP 25x25 / M8	25	25	2,5	M8
SPP 25x25 / M10	25	25	3	M10
SPP 30x30 / M8	30	30	2,5	M8
SPP 30x30 / M10	30	30	3	M10
SPP 30x30 / M12	30	30	3	M12
SPP 35x35 / M8	35	35	2,5	M8
SPP 35x35 / M10	35	35	3	M10
SPP 35x35 / M12	35	35	3	M12
SPP 35x35 / M16	35	35	3	M16
SPP 40x40 / M8	40	40	2,5	M8
SPP 40x40 / M10	40	40	3	M10
SPP 40x40 / M12	40	40	3	M12
SPP 40x40 / M16	40	40	3	M16
SPP 40x40 / M20	40	40	4	M20
SPP 45x45 / M10	45	45	3	M10
SPP 45x45 / M12	45	45	3	M12
SPP 45x45 / M16	45	45	3	M16
SPP 45x45 / M20	45	45	4	M20
SPP 50x50 / M10	50	50	3	M10
SPP 50x50 / M12	50	50	3	M12
SPP 50x50 / M16	50	50	4	M16
SPP 50x50 / M20	50	50	4	M20
SPP 50x50 / M24	50	50	4	M24



Walter Bethke GmbH & Co. KG

Technische Kunststoff - und Hybridprodukte

Order Number	A	B	H	M
	mm	mm	mm	
SPP 60x60 / M16	60	60	4	M16
SPP 60x60 / M20	60	60	4	M20
SPP 60x60 / M24	60	60	4	M24
SPP 70x70 / M16	70	70	4	M16
SPP 70x70 / M20	70	70	4	M20
SPP 70x70 / M24	70	70	4	M24
SPP 80x80 / M16	80	80	4	M16
SPP 80x80 / M20	80	80	4	M20
SPP 80x80 / M24	80	80	4	M24
SPP 100x100 / M16	100	100	4	M16
SPP 100x100 / M20	100	100	4	M20
SPP 100x100 / M24	100	100	4	M24
SPP 50x25 / M8	50	25	2,5	M8
SPP 50x25 / M10	50	25	3	M10
SPP 50x25 / M12	50	25	3	M12
SPP 50x30 / M8	50	30	2,5	M8
SPP 50x30 / M10	50	30	3	M10
SPP 50x30 / M12	50	30	3	M12
SPP 50x30 / M16	50	30	4	M16
SPP 60x30 / M12	60	30	3	M12
SPP 60x30 / M16	60	30	3	M16
SPP 60x30 / M20	60	30	3	M20
SPP 60x40 / M12	60	40	3	M12
SPP 60x40 / M16	60	40	4	M16
SPP 60x40 / M20	60	40	4	M20
SPP 60x40 / M24	60	40	4	M24
SPP 80x40 / M16	80	40	4	M16
SPP 80x40 / M20	80	40	4	M20
SPP 80x40 / M24	80	40	4	M24
SPP 80x50 / M16	80	50	4	M16
SPP 80x50 / M20	80	50	4	M20
SPP 80x50 / M24	80	50	4	M24
SPP 80x60 / M16	80	60	4	M16
SPP 80x60 / M20	80	60	4	M20
SPP 80x60 / M24	80	60	4	M24
SPP 100x50 / M16	100	50	4	M16
SPP 100x50 / M20	100	50	4	M20
SPP 100x50 / M24	100	50	4	M24