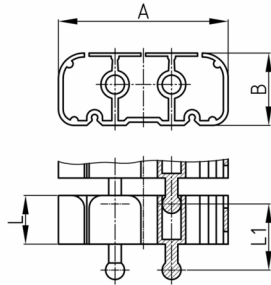


Product Group KBKCL

Rectangular cable chain (2 borders with radius) made of PP for horizontal and vertical cable ducting

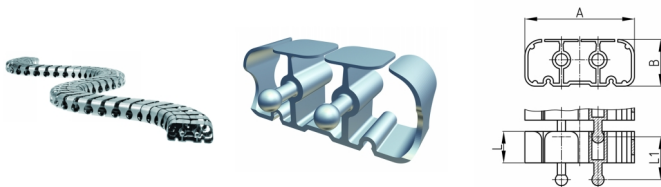


Standard Colours

- black
- white
- uncoloured-translucent
- silver

Material

- Polypropylene (PP)



Product information

- Flexible cable ducting system for horizontal and vertical cable ducting.
- Any assembly with fixing elements "KBKCLZ1" or "KBKZ8S".

The chain links arranged displaceable to each other.

- 2 connectors for optimal force transmission, especially torque, pressure- and transverse forces
- Three-chamber-system for separating data- and power cables
- Extended or pushed together, rigid laying of the cable routing chain especially suitable for wall, furniture, undertable and ceiling mounting.
- The pushed together, rigid installation of the cable guide chain is conditionally suitable for low-traffic passage areas.
- Tool-free connection to all traded floor outlets by using "KBKZ10S / Clip-S Floor (CL+ FLII)".
- Tool-free and time saving installation of cables by zipper principle.
- Optimized possibility for lateral squeeze-proof unthreading of the cables.
- 3-D movable and approx. 25 % lengthwise flexible
- Tool-free branching through distributors
- Compatible with cable chain "KBKPRO", "KBKCUB", "KBKCMX" and "KBKFLII" (intermateable).
- Compatible with KBK Bridge
- Extensive range of adapters
- Length of the cable chain: approx. 100 cm when pulled apart, approx. 69 cm when compressed
- Short time loads up to 70 kg for 5 chain elements at 20 °C room temperature• In passage areas, the tread resistance of the cable guide chain can be increased by up to 35% by blocking the chain links.

Order Number	A	B	L	L1	Element(s)	For up to x cable
	mm	mm	mm	mm	piece(s)	piece(s)
KBKCL 100 cm	53	23	15,5	21,5	46	20