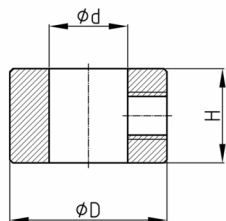


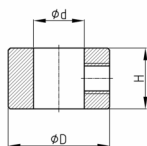
### Product Group KBKZ2C

Fixing bushing made of steel for hauling rope KBKZ2B or assembly pole KBKZ2A



#### Material

- Nickel-plated steel



#### Product information

- Fixing bush for force transmission from the cable chain "KBKCUB" to assembly pole or assembly rope.
- The fastening sleeve fixes the cable chain "KBKCUB", "KBKPRO" and "KBKPM" on traction rope or pole.
- When attaching the cable chain to the pull rope or mounting rod, the chain links can be pushed together or pulled apart.

Order Number	d	D	H
	mm	mm	mm
KBKZ2C / 10x5x6 mm	10	5	6