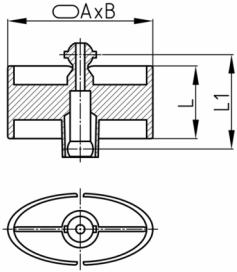


### Product Group KBKPM

Oval cable chainmade of PP for vertical cable ducting



#### Standard Colours

- black
- white
- uncoloured-translucent
- silver

#### Material

- Polypropylene (PP)



#### Product information

- Flexible cable ducting system for horizontal and vertical cable ducting.
- As rigid cable channel with stainless steel assembly pole ("KBKZ2A") for any assembly.
- Chain links arranged displaceable and articulated to each other
- A displaceable-gimbal, massive plug connector for optimal force transmission, especially at torque, pressure and transverse forces.
- Two-chamber-system for separating data and power lines
- Closed centre channel to accommodate mounting rope "KBKZ2A" or hauling rope "KBKZ2B".
- Extended or pushed together, rigid laying of the cable routing chain especially suitable for wall, furniture, undertable and ceiling mounting.
- Pushed together, rigid laying of the cable routing chain
- Tool-free and time saving installation of cables by zipper principle.
- Possibility to unthread the cables from the side
- 3-D-movable and appr. 35 % lengthwise flexible
- Tool-free branching through distributors (on request)
- Compatible with cable chain "KBKQUA" and "KBKPMTSM" (intermateable).
- Extensive range of adapters
- By using stainless steel assembly pole ("KBKZ2A") or hauling rope ("KBKZ2B") up to 100 kg traction

Order Number	A	B	L	L1	Element(s)	For up to x cable
	mm	mm	mm	mm	piece(s)	piece(s)
KBKPM 100 cm	70	34	35	45	22	40