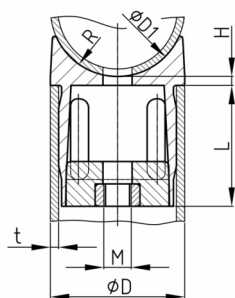


[Types.navProduktgruppe_Caption]

Multi-purpose, form- and friction-locking 90 Grad connectors for round tubes made of PA



Standard Colours

- black RAL 9005

Material

- Base body: Polyamide (PA 6)
- Nut: zinc-plated steel



Product information

- Due to the significant expander effect usage of thin-walled tubes in connection with less strength is not recommendable (soft flexible Aluminium and plastic with tube wall thickness 1 mm).
- The screw which screws down the pre-assembled cone nut (positioned in the connector) reaches through the profile which has to be fixed under 90° - this screw is not part of the delivery and will be assigned and assembled by the customer after fixing of needed length.
- The pull-out strength depends mainly on the pipe tolerance and the surface condition of the inner pipe (smooth coatings that protrude into the inner pipe should be avoided, lubricant residues should be removed).
- Tube connectors are supplied pre-assembled.
- The connector is pushed into tube 1 up to the collar stop and tube 2 is friction screwed/tightened after positive contact with tube 1.
- With dry, bare, oil- and coating-free pipes with sufficient strength, high pull-out strengths can be achieved with relatively low tightening torques.
- The connections can be tightened up to the cone stop. However, the pipe strength must be observed (pipe expansion).
- For 90° connections of round pipes with profiles such as round pipe, flat oval pipe or half-round profile.

Product options on inquiry

- Further sizes (nominal-Ø and wall thickness of tube)
- Sizes RVB 90 for docking tube 2 with variational tube diameter

Order Number	D	D1	H	L	M	t
	mm	mm	mm	mm	mm	mm
RVB 90 / 15x1	15	15	2	20	M6	1
RVB 90 / 16x1	16	16	2	20	M6	1
RVB 90 / 16x1,5	16	16	2	20	M6	1,5
RVB 90 / 18x1	18	18	2	20	M6	1
RVB 90 / 18x1,5	18	18	2	20	M6	1,5
RVB 90 / 20x1	20	20	2	20	M6	1
RVB 90 / 20x1,5	20	20	2	20	M6	1,5
RVB 90 / 22x1	22	22	2	20	M6	1
RVB 90 / 22x1,5	22	22	2	20	M6	1,5
RVB 90 / 23x1	23	23	2	20	M6	1



Walter Bethke GmbH & Co. KG

Technische Kunststoff - und Hybridprodukte

Order Number	D	D1	H	L	M	t
	mm	mm	mm	mm		mm
RVB 90 / 24x1	24	24	2	20	M6	1
RVB 90 / 24x1,5	24	24	2	20	M6	1,5
RVB 90 / 25x1	25	25	2	26	M6	1
RVB 90 / 25x1,5	25	25	2	26	M6	1,5
RVB 90 / 25x2	25	25	2	26	M6	2
RVB 90 / 26x1	26	26	2	26	M6	1
RVB 90 / 26x1,5	26	26	2	26	M6	1,5
RVB 90 / 26x2	26	26	2	26	M6	2
RVB 90 / 26x2,5	26	26	2	26	M6	2,5
RVB 90 / 27x1	27	27	2	26	M6	1
RVB 90 / 27x1,5	27	27	2	26	M6	1,5
RVB 90 / 27x2	27	27	2	26	M6	2
RVB 90 / 27x2,5	27	27	2	26	M6	2,5
RVB 90 / 28x1	28	28	2	26	M6	1
RVB 90 / 28x1,5	28	28	2	26	M6	1,5
RVB 90 / 28x2	28	28	2	26	M6	2
RVB 90 / 28x2,5	28	28	2	26	M6	2,5
RVB 90 / 30x1	30	30	2	26	M6	1
RVB 90 / 30x1,5	30	30	2	26	M6	1,5
RVB 90 / 30x2	30	30	2	26	M6	2
RVB 90 / 32x1	32	32	2	26	M6	1
RVB 90 / 32x1,5	32	32	2	26	M6	1,5
RVB 90 / 32x2	32	32	2	26	M6	2
RVB 90 / 32x2,5	32	32	2	26	M6	2,5