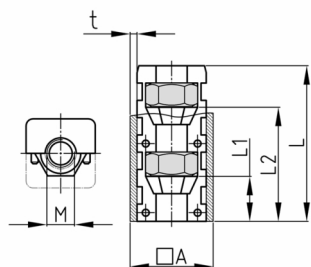


### Product Group EVQM2

Assembled expander connectors without collar made of PA for square tubes with two hexagon nuts

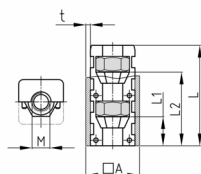


#### Standard Colours

- black

#### Material

- Base body: Polyamide (PA)
- Nut: zinc-plated steel



#### Product information

- These two-part expander connectors without collar have tapered conical cavities for hexagon nuts or screws. Tightening of the thread presses the connector against inner tube wall (rawle plug effect), providing a connection resistant to tension. The intensity of this resistance depends to a degree from the quality of the tubes (tolerances, roughness, welding seam, etc.) and as well the torque of the tightening. We advise to check the application beforehand.
- Stepped bores in the tube (outer bore larger than the diameter of the screw head, inner hole suitable for the respective thread) and use of slotted or hexagon socket screws allow high extraction forces without deformation of the tube wall.
- Order-related production for individual article sizes! Please ask for minimum quantity.
- SO = this dimension has an easier fit than standard and can be pressed in to standard wall thickness without the help of tools
- Right-angled connection to trusses
- Tube extensions (1 expander with nut and 1 expander with screw)
- Subsequent installation of shelf compartments in already existing constructions
- Frequently disassembled and reassembled racks
- Invisible connections

Order Number	A	L	L1	L2	M	t
	mm	mm	mm	mm		mm
EVQM2 15x15x1 / M6	15	42	12	32	M6	1
EVQM2 18x18x1,5 / M8	18	43	12	32	M8	1,5
EVQM2 20x20x1 / M6	20	42	21	23	M6	1
EVQM2 20x20x1 / M8	20	43	12	32	M8	1
EVQM2 20x20x1,5 / M6	20	42	12	32	M6	1,5
EVQM2 20x20x1,5 / M6 SO	20	42	21	32	M6	1,5
EVQM2 20x20x1,5 / M8	20	43	12	32	M8	1,5
EVQM2 20x20x1,5/M8 DIN 985	20	42	21	23	M8	1,5
EVQM2 20x20x2 / M8	20	43	12	32	M8	2
EVQM2 22x22x1,5 / M6	22	41	12	32	M6	1,5
EVQM2 22x22x1,5 / M8	22	42	12	32	M8	1,5
EVQM2 25x25x1,5 / M8	25	43	12	32	M8	1,5
EVQM2 25x25x1,5 / M10	25	42	10	30	M10	1,5
EVQM2 25x25x2 / M8	25	43	12	32	M8	2



# Walter Bethke GmbH & Co. KG

Technische Kunststoff - und Hybridprodukte

Order Number	A	L	L1	L2	M	t
	mm	mm	mm	mm		mm
EVQM2 30x30x1,5 / M 8	30	41	10	30	M8	1,5
EVQM2 30x30x1,5 / M10	30	42	10	30	M10	1,5
EVQM2 30x30x2 / M8	30	41	12	32	M8	2
EVQM2 30x30x2 / M10	30	43	10	30	M10	2
EVQM2 35x35x2 / M10	35	42	10	30	M10	2
EVQM2 40x40x1,2 / M10	40	40	10	30	M10	1,2
EVQM2 40x40x1,2 / M12	40	40	8	28	M12	1,2
EVQM2 40x40x2 / M10	40	42	10	30	M10	2
EVQM2 40x40x3 / M8	40	42	11	31	M8	3
EVQM2 40x40x3 / M10	40	41	10	30	M10	3
EVQM2 45x45x1,5 / M10	45	39	6	29	M10	1,5