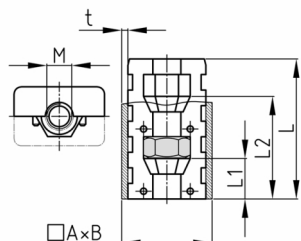


### Product Group EVRMV

Assembled expander connectors without collar made of PA for rectangular tubes with one hexagon nut (in the front)

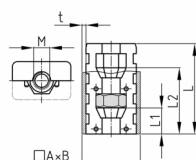


#### Standard Colours

- black

#### Material

- Base body: Polyamide (PA)
- Nut: zinc-plated steel



#### Product information

- These two-part expander connectors without collar have tapered conical cavities for hexagon nuts or screws. Tightening of the thread presses the connector against inner tube wall (rawle plug effect), providing a connection resistant to tension. The intensity of this resistance depends to a degree from the quality of the tubes (tolerances, roughness, welding seam, etc.) and as well the torque of the tightening. We advise to check the application beforehand.
- Stepped bores in the tube (outer bore larger than the diameter of the screw head, inner hole suitable for the respective thread) and use of slotted or hexagon socket screws allow high extraction forces without deformation of the tube wall.
- Order-related production for individual article sizes! Please ask for minimum quantity.
- Right-angled connection to trusses
- Tube extensions (1 expander with nut and 1 expander with screw)
- Subsequent installation of shelf compartments in already existing constructions
- Frequently disassembled and reassembled racks
- Invisible connections

Order Number	A	B	L	L1	L2	M	t
	mm	mm	mm	mm	mm		mm
EVRMV 30x15x1,5 / M5	30	15	42	12	32	M5	1,5
EVRMV 30x15x1,5 / M6	30	15	42	12	32	M6	1,5
EVRMV 30x20x1,5 / M6	30	20	43	12	32	M6	1,5
EVRMV 30x20x1,5 / M8	30	20	43	12	32	M8	1,5
EVRMV 30x20x2 / M6	30	20	43	12	32	M6	2
EVRMV 40x15x2 / M5	40	15	42	14	33	M5	2
EVRMV 40x20x1,5 / M8	40	20	42	12	32	M8	1,5
EVRMV 40x20x1,5 / M 8 KURZ	40	20	30	12		M8	1,5
EVRMV 40x25x2 / M10	40	25	42	10	30	M10	2
EVRMV 50x25x1,2-1,6 / M10	50	25	44	10	30	M10	1,2-1,6
EVRMV 50x25x2 / M10	50	25	43	10	30	M10	2
EVRMV 50x30x2 / M10	50	30	38	8	25	M10	2
EVRMV 60x30x2 / M10	60	30	40	10	30	M10	2
EVRMV 60x40x2 / M10	60	40	43	10	30	M10	2