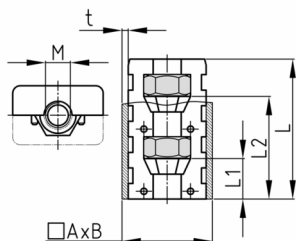


Product Group EVRM2

Assembled expander connectors without collar made of PA for rectangular tubes with two hexagon nuts

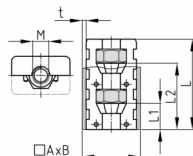


Standard Colours

- black

Material

- Base body: Polyamide (PA)
- Nut: zinc-plated steel



Product information

- These two-part expander connectors without collar have tapered conical cavities for hexagon nuts or screws. Tightening of the thread presses the connector against inner tube wall (rawle plug effect), providing a connection resistant to tension. The intensity of this resistance depends to a degree from the quality of the tubes (tolerances, roughness, welding seam, etc.) and as well the torque of the tightening. We advise to check the application beforehand.
- Stepped bores in the tube (outer bore larger than the diameter of the screw head, inner hole suitable for the respective thread) and use of slotted or hexagon socket screws allow high extraction forces without deformation of the tube wall.
- Order-related production for individual article sizes! Please ask for minimum quantity.
- Right-angled connection to trusses
- Tube extensions (1 expander with nut and 1 expander with screw)
- Subsequent installation of shelf compartments in already existing constructions
- Frequently disassembled and reassembled racks
- Invisible connections

| Order Number | A | B | L | L1 | L2 | M | t |
|---------------------------|----|----|----|----|----|-----|---------|
| | mm | mm | mm | mm | mm | | mm |
| EVRM2 30x15x1,5 / M5 | 30 | 15 | 42 | 12 | 32 | M5 | 1,5 |
| EVRM2 30x15x1,5 / M6 | 30 | 15 | 42 | 12 | 32 | M6 | 1,5 |
| EVRM2 30x20x1,5 / M6 | 30 | 20 | 43 | 12 | 32 | M6 | 1,5 |
| EVRM2 30x20x1,5 / M8 | 30 | 20 | 43 | 12 | 32 | M8 | 1,5 |
| EVRM2 30x20x2 / M6 | 30 | 20 | 43 | 12 | 32 | M6 | 2 |
| EVRM2 40x15x2 / M5 | 40 | 15 | 42 | 14 | 33 | M5 | 2 |
| EVRM2 40x20x1,5 / M8 | 40 | 20 | 42 | 12 | 32 | M8 | 1,5 |
| EVRM2 40x25x2 / M10 | 40 | 25 | 42 | 10 | 30 | M10 | 2 |
| EVRM2 50x25x1,2-1,6 / M10 | 50 | 25 | 44 | 10 | 30 | M10 | 1,2-1,6 |
| EVRM2 50x25x2 / M10 | 50 | 25 | 43 | 10 | 30 | M10 | 2 |
| EVRM2 50x30x2 / M10 | 50 | 30 | 38 | 8 | 25 | M10 | 2 |
| EVRM2 60x30x2 / M10 | 60 | 30 | 40 | 10 | 30 | M10 | 2 |
| EVRM2 60x40x2 / M10 | 60 | 40 | 43 | 10 | 30 | M10 | 2 |