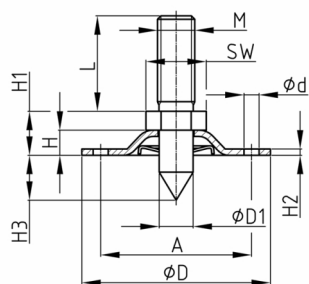


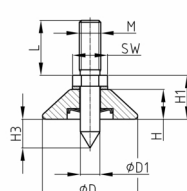
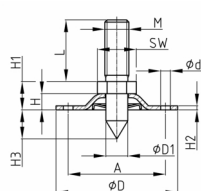
### Product Group D

Overhead bracing screws (hexagonal) with swivel steel or plastic foot



#### Material

- Thread: zinc-plated steel
- Metal base: zinc-plated steel
- Base: Polypropylene (PP)



- \*) = only with plastic plates in the colours black and white
- Used, for example, in shop fitting and display construction.

Order Number	A	d	D	D1	H	H1	H2	H3	L	M	WAF
	mm	mm	mm	mm	mm	mm	mm	mm	mm		mm
D 302			30	9	6,5	12	1,5	17	55	M10	14
D 702	36,5	5,2	47	9	6	12	1,5	18	55	M10	14
D 706 *			44	9	14,5	21		17	60	M10	14