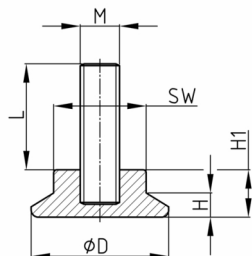


Product Group TV

Adjustable screws with round plastic base made of PA and moulded square, thread bolt overmoulded

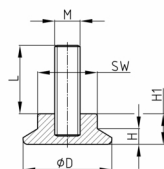


Standard Colours

- black

Material

- Thread: zinc-plated steel
- Base: Polyamide (PA)



- ISK = Hexagon SW 5 in the threaded end

Product options on inquiry

- Further thread lengths/sizes
- Stainless steel screws
- Hexagon socket in thread end
- Plastic base in special colours according to RAL-System

Order Number	D	H	H1	L	M	WAF
	mm	mm	mm	mm		mm
TV 30 M8x10	31		15	10	M8	17,3
TV 30 / M8x15	31	7	15	15	M8	17,3
TV 30 / M8x20	31	7	15	20	M8	17,3
TV 30 / M8x30	31	7	15	30	M8	17,3
TV 30 / M8x50	31	7	15	50	M8	17,3
TV 30 / M8x70	31	7	15	70	M8	17,3
TV 30 M10x15	30		14	15	M10	18
TV 30 / M10x20	30		14	20	M10	18
TV 30 / M10x30	30		14	30	M10	18
TV 30 / M10x40	30		14	40	M10	18
TV 30 / M10x50	30		14	50	M10	18
TV 30 M10x50 ISK	30		14	50	M10	18
TV 30 / M10x60	30		14	60	M10	18
TV 30 / M10x70	30		14	70	M10	18
TV 30 / M10x100	30		14	100	M10	18
TV 30 / M10x140	30		14	140	M10	18
TV 47 M8x10	46		15	10	M8	18
TV 47 M8x15	46		15	15	M8	18
TV 47 / M8x20	46		15	20	M8	18
TV 47 / M8x30	46		15	30	M8	18
TV 47 / M8x50	46		15	50	M8	18



Walter Bethke GmbH & Co. KG

Technische Kunststoff - und Hybridprodukte

Order Number	D	H	H1	L	M	WAF
	mm	mm	mm	mm		mm
TV 47 / M8x70	46		15	70	M8	18
TV 47 / M10x20	46		15	20	M10	18
TV 47 / M10x30	46		15	30	M10	18
TV 47 / M10x40	46		15	40	M10	18
TV 47 / M10x50	46		15	50	M10	18
TV 47 / M10x60	46		15	60	M10	18
TV 47 / M10x70	46		15	70	M10	18
TV 47 / M10x100	46		15	100	M10	18
TV 47 / M10x140	46		15	140	M10	18