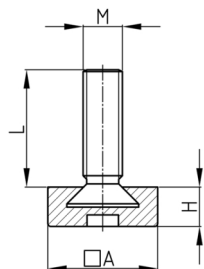


Product Group LV

Adjusting screws with square plastic base made of PE, threaded bolt overmoulded

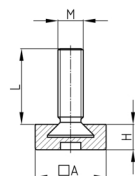


Standard Colours

- black

Material

- Thread: zinc-plated steel
- Base: Polyethylene (PE)



Product options on inquiry

- Further thread lengths/sizes
- Stainless steel screws
- Hexagon socket in thread end

Order Number	A	H	L	M
	mm	mm	mm	
LV 20 / M8x20	20	6,3	16	M8
LV 20 / M8x30	20	6,3	26	M8
LV 20 / M8x40	20	6,3	36	M8
LV 20 / M8x50	20	6,3	46	M8
LV 25 / M8x20	25	8	16	M8
LV 25 / M8x30	25	8	26	M8
LV 25 / M8x40	25	8	36	M8
LV 25 / M8x50	25	8	46	M8
LV 25 / M10x20	25	8	15	M10
LV 25 / M10x30	25	8	25	M10
LV 25 / M10x40	25	8	35	M10
LV 25 / M10x50	25	8	45	M10
LV 30 / M10x20	30	8	15	M10
LV 30 / M10x30	30	8	25	M10
LV 30 / M10x40	30	8	35	M10
LV 30 / M10x50	30	8	45	M10
LV 40 / M8x20	40	8	16	M8
LV 40 / M8x30	40	8	26	M8
LV 40 / M8x40	40	8	36	M8
LV 40 / M8x50	40	8	46	M8
LV 40 / M10x20	40	8	15	M10
LV 40 / M10x30	40	8	25	M10
LV 40 / M10x40	40	8	35	M10



Walter Bethke GmbH & Co. KG

Technische Kunststoff - und Hybridprodukte

Order Number	A	H	L	M
	mm	mm	mm	
LV 40 / M10x50	40	8	45	M10