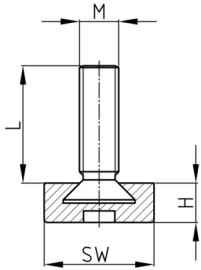


Product Group LS

Adjusting screws with hexagonal plastic base made of PE, threaded bolt overmoulded

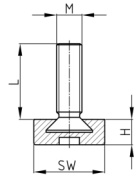


Standard Colours

- black

Material

- Thread: zinc-plated steel
- Base: Polyethylene (PE)



Product options on inquiry

- Further thread lengths/sizes
- Stainless steel screws
- Hexagon socket in thread end

Order Number	H	L	M	WAF
	mm	mm		mm
LS 20 / M8x20	8,5	15	M8	20
LS 20 / M8x30	8,5	25	M8	20
LS 20 / M8x40	8,5	35	M8	20
LS 20 / M8x50	8,5	45	M8	20
LS 25 / M8x20	8,5	15	M8	25
LS 25 / M8x30	8,5	25	M8	25
LS 25 / M8x40	8,5	35	M8	25
LS 25 / M8x50	8,5	45	M8	25
LS 25 / M10x20	8,5	15	M10	25
LS 25 / M10x30	8,5	25	M10	25
LS 25 / M10x40	8,5	35	M10	25
LS 25 / M10x50	8,5	45	M10	25
LS 30 / M8x20	8,5	15	M8	30
LS 30 / M8x30	8,5	25	M8	30
LS 30 / M8x40	8,5	35	M8	30
LS 30 / M8x50	8,5	45	M8	30
LS 30 / M10x20	8,5	15	M10	30
LS 30 / M10x30	8,5	25	M10	30
LS 30 / M10x40	8,5	35	M10	30
LS 30 / M10x50	8,5	45	M10	30