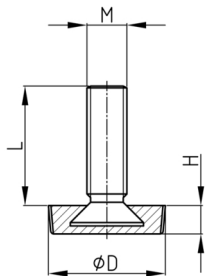


Product Group 71

Adjusting screws with knurled plastic base made of PE and overmoulded threaded bolt

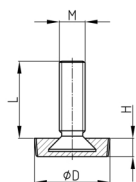


Standard Colours

- black

Material

- Thread: zinc-plated steel
- Base: Polyethylene (PE)



Product information

- Adjustable screws with foot-diameter 15 mm have no knurling.

Product options on inquiry

- Further thread lengths/sizes
- Stainless steel screws
- Plastic base in special colours according to RAL-System

Order Number	D	H	L	M
	mm	mm	mm	
71-15 / M5x16	15	6	13	M5
71-15 / M5x20	15	6	17	M5
71-15 / M5x25	15	6	22	M5
71-15 / M5x30	15	6	27	M5
71-15 / M5x40	15	6	37	M5
71-15 / M5x50	15	6	47	M5
71-15 / M6x12	15	6	9	M6
71-15 / M6x14	15	6	11	M6
71-15 / M6x16	15	6	13	M6
71-15 / M6x20	15	6	17	M6
71-15 / M6x25	15	6	22	M6
71-15 / M6x30	15	6	27	M6
71-15 / M6x40	15	6	37	M6
71-15 / M6x50	15	6	47	M6
71-20 / M5x16	20	6	13	M5
71-20 / M5x20	20	6	17	M5
71-20 / M5x25	20	6	22	M5
71-20 / M5x30	20	6	27	M5
71-20 / M5x40	20	6	37	M5
71-20 / M5x50	20	6	47	M5
71-20 / M6x12	20	6	9	M6
71-20 / M6x14	20	6	11	M6



Walter Bethke GmbH & Co. KG

Technische Kunststoff - und Hybridprodukte

Order Number	D	H	L	M
	mm	mm	mm	
71-20 / M6x16	20	6	13	M6
71-20 / M6x20	20	6	17	M6
71-20 / M6x25	20	6	22	M6
71-20 / M6x30	20	6	27	M6
71-20 / M6x40	20	6	37	M6
71-20 / M6x50	20	6	47	M6
71-20 / M8x16	20	6	12	M8
71-20 / M8x20	20	6	16	M8
71-20 / M8x25	20	6	21	M8
71-20 / M8x30	20	6	26	M8
71-20 / M8x40	20	6	36	M8
71-20 / M8x50	20	6	46	M8
71-25 / M5x16	25	6	13	M5
71-25 / M5x20	25	6	17	M5
71-25 / M5x25	25	6	22	M5
71-25 / M5x30	25	6	27	M5
71-25 / M5x40	25	6	37	M5
71-25 / M5x50	25	6	47	M5
71-25 / M6x12	25	6	9	M6
71-25 / M6x14	25	6	11	M6
71-25 / M6x16	25	6	13	M6
71-25 / M6x20	25	6	17	M6
71-25 / M6x25	25	6	22	M6
71-25 / M6x30	25	6	27	M6
71-25 / M6x40	25	6	37	M6
71-25 / M6x50	25	6	47	M6
71-25 / M8x16	25	6	12	M8
71-25 / M8x20	25	6	16	M8
71-25 / M8x25	25	6	21	M8
71-25 / M8x30	25	6	26	M8
71-25 / M8x40	25	6	36	M8
71-25 / M8x50	25	6	46	M8