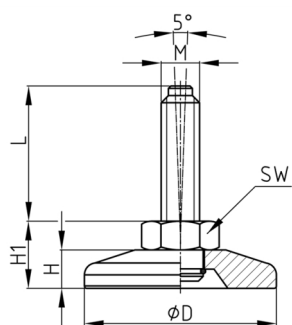


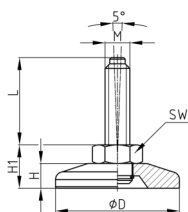
Product Group MFSSC

Machine feet made of stainless steel



Material

- AISI 304 (A2)



Product information

- The thread is screwed into the foot and can be turned!
- The machine foot can compensate for uneven floors up to 5°.
- The load capacity of the screw (buckling length!) may be less than indicated in the table.

Product options on inquiry

- Machine foot made of stainless steel AISI 316 (A4)
- Delivery with additional steel nut possible.

Order Number	D	F max.	H	H1	L	M	WAF
	mm	kg	mm	mm	mm		mm
MFSSC 30 / M8x25	30	800	8	14	25	M8	14
MFSSC 30 / M8x50	30	800	8	14	50	M8	14
MFSSC 30 / M10x25	30	800	8	14	25	M10	14
MFSSC 30 / M10x50	30	800	8	14	50	M10	14
MFSSC 30 / M10x75	30	800	8	14	75	M10	14
MFSSC 38 / M8x25	38	900	8	14	25	M8	14
MFSSC 38 / M8x50	38	900	8	14	50	M8	14
MFSSC 38 / M10x25	38	900	8	14	25	M10	14
MFSSC 38 / M10x50	38	900	8	14	50	M10	14
MFSSC 38 / M10x75	38	900	8	14	75	M10	14
MFSSC 38 / M12x50	38	900	8	14	50	M12	14
MFSSC 38 / M12x100	38	900	8	14	100	M12	14

Ordering example

- Group + D + M + Thread Length ---> MFSSC 30 M8x 25