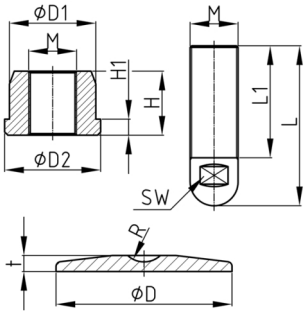


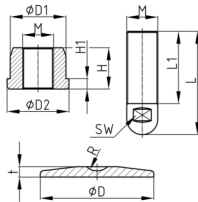
### Product Group MFTE

Machine feet made of stainless steel with sealing bush



#### Material

- AISI 304 (A2)



#### Product information

- The machine feet type MFTE provided with possibility to purchase separate parts. Please look at product group MFTA/ MFTB and MFTD.
- Type MFTE meets the strictest hygienic guidelines.
- The load capacity of the screw (buckling length!) may be less than indicated in the table.
- Pharmaceutical industry, food industry, beverage industry, dairies, chemical industry

#### Product options on inquiry

- Machine foot made of stainless steel AISI 316 (A4)

Order Number	D	D1	D2	F max.	H	H1	H2	L	L1	M	WAF
	mm	mm	mm	kg	mm	mm	mm	mm	mm		mm
MFTE 80 / M20x70	60	54	80	3500	25	8	10	100	70	M20	17
MFTE 100 / M24x70	60	54	100	7000	40	10	10	100	70	M24	20
MFTE 120 / M30x70	60	54	120	8000	40	10	10	100	70	M30	26
MFTE 120 / M30x100	80	75	120	8000	25	10	10	140	100	M30	26
MFTE 150 / M40x100	60	54	150	12000	50	10	15	140	100	M40	36
MFTE 200 / M40x100	60	54	200	12000	50	10	15	140	100	M40	36