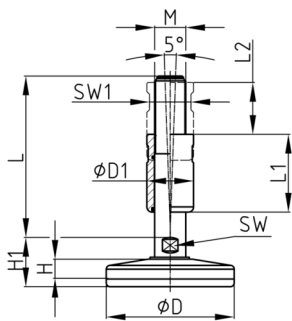


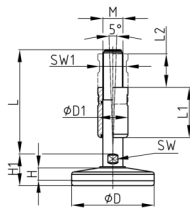
Product Group MFTM

Machine feet made of stainless steel with sealing bush and vulcanised rubber pad



Material

- Base body: AISI 304 (A2)
- Rubber: NBR 90 Shore



Product information

- The machine base has a sealing bush that covers parts of the thread. An O-ring is incorporated inside the bush. The sealing ring prevents the penetration of dirt by mechanically sticking to the thread surface. Thus the strictest legal hygiene standards are fulfilled.
- Die abgerundete Form und der verdeckte Übergang vom Fuß zum Gewinde erleichtern die Reinigung.
- The machine foot can compensate for uneven floors up to 5°.
- The load capacity of the screw (buckling length!) may be less than indicated in the table.
- Character dimension "L2" corresponds to the maximum usable stroke in mm.
- Pharmaceutical industry, food industry, beverage industry, dairies, chemical industry

Product options on inquiry

- Machine foot made of stainless steel AISI 316 (A4)
- Rubber-pad made of white EPDM (high resistance against chemical degreaser and solvent)

Order Number	D	D1	F max.	H	H1	L	L1	L2	M	WAF	SW1
	mm	mm	kg	mm	mm	mm	mm	mm		mm	mm
MFTM 75 / M16x125	75	25	2000	18	28	125	60	40	M16	16	20
MFTM 100 / M16x150	100	25	3000	23	38	150	60	40	M16	17	20
MFTM 100 / M20x150	100	30	3000	23	38	150	60	40	M20	17	26
MFTM 100 / M24x150	100	35	3000	23	38	150	60	40	M24	20	30
MFTM 100 / M30x150	100	42	3000	23	38	150	60	40	M30	26	36
MFTM 120 / M20x150	120	30	4000	23	38	150	60	40	M20	17	26
MFTM 120 / M24x150	120	35	4000	23	38	150	60	40	M24	20	30
MFTM 120 / M30x150	120	42	4000	23	38	150	60	40	M30	26	36
MFTM 150 / M20x150	150	30	5000	23	44	150	60	40	M20	17	26
MFTM 150 / M24x150	150	35	5000	23	44	150	60	40	M24	20	30
MFTM 150 / M30x150	150	42	5000	23	44	150	60	40	M30	26	36