

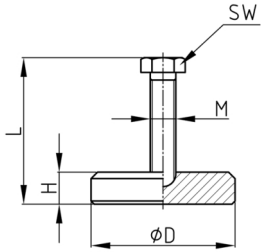


Walter Bethke GmbH & Co. KG

Technische Kunststoff - und Hybridprodukte

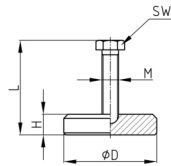
Product Group MFTZ

Machine feet made of zinc-plated steel base and browned steel screw



Material

- Screw: steel browned
- Base: zinc-plated steel



Product information

- The machine foot has a free screw laying on a base. Regulation from the top.
- The load capacity of the screw (buckling length!) may be less than indicated in the table.
- Machine tools, cutting machines, woodworking machines

Order	D m	F ma m	H m	L m	M	W AF m
MF 90	90	35	20	94	M1	24
MF 90	90	35	20	10	M1	24