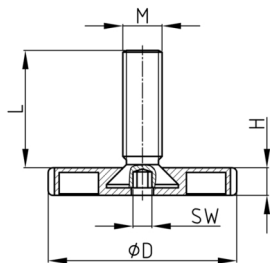


### Product Group KT

Adjusting screws with knurled plastic base made of PA and overmoulded threaded bolt

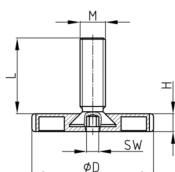


#### Standard Colours

- black

#### Material

- Thread: zinc-plated steel
- Base: Polyamide (PA)



Order Number	D	H	L	M	WAF
	mm	mm	mm		mm
KT 50 / M8x20	50	8	17	M8	5
KT 50 / M8x30	50	8	27	M8	5
KT 50 / M8x40	50	8	37	M8	5
KT 50 / M8x50	50	8	47	M8	5
KT 50 / M8x60	50	8	57	M8	5
KT 50 / M10x20	50	8	15,5	M10	5
KT 50 / M10x30	50	8	25,5	M10	5
KT 50 / M10x40	50	8	35,5	M10	5
KT 50 / M10x50	50	8	45,5	M10	5
KT 50 / M10x60	50	8	55,5	M10	5
KT 55 / M8x20	55	8	17	M8	5
KT 55 / M8x25	55	8	22	M8	5
KT 55 / M8x30	55	8	27	M8	5
KT 55 / M8x40	55	8	37	M8	5
KT 55 / M8x50	55	8	47	M8	5
KT 55 / M8x60	55	8	57	M8	5
KT 55 / M10x20	55	8	15,5	M10	5
KT 55 / M10x30	55	8	25,5	M10	5
KT 55 / M10x40	55	8	35,5	M10	5
KT 55 / M10x50	55	8	45,5	M10	5
KT 55 / M10x60	55	8	55,5	M10	5
KT 58 / M8x20	58	8	17	M8	5
KT 58 / M8x30	58	8	27	M8	5
KT 58 / M8x40	58	8	37	M8	5
KT 58 / M8x50	58	8	47	M8	5



# Walter Bethke GmbH & Co. KG

Technische Kunststoff - und Hybridprodukte

Order Number	D	H	L	M	WAF
	mm	mm	mm		mm
KT 58 / M8x60	58	8	57	M8	5
KT 58 / M10x20	58	8	15,5	M10	5
KT 58 / M10x30	58	8	25,5	M10	5
KT 58 / M10x40	58	8	35,5	M10	5
KT 58 / M10x50	58	8	45,5	M10	5
KT 58 / M10x60	58	8	55,5	M10	5
KT 60 / M8x20	60	8	17	M8	5
KT 60 / M8x30	60	8	27	M8	5
KT 60 / M8x40	60	8	37	M8	5
KT 60 / M8x50	60	8	47	M8	5
KT 60 / M8x60	60	8	57	M8	5
KT 60 / M10x20	60	8	15,5	M10	5
KT 60 / M10x30	60	8	25,5	M10	5
KT 60 / M10x40	60	8	35,5	M10	5
KT 60 / M10x50	60	8	45,5	M10	5
KT 60 / M10x60	60	8	55,5	M10	5
KT 63 / M8x20	63	8	17	M8	5
KT 63 / M8x30	63	8	27	M8	5
KT 63 / M8x40	63	8	37	M8	5
KT 63 / M8x50	63	8	47	M8	5
KT 63 / M8x60	63	8	57	M8	5
KT 63 / M10x20	63	8	15,5	M10	5
KT 63 / M10x30	63	8	25,5	M10	5
KT 63 / M10x40	63	8	35,5	M10	5
KT 63 / M10x50	63	8	45,5	M10	5
KT 63 / M10x60	63	8	55,5	M10	5