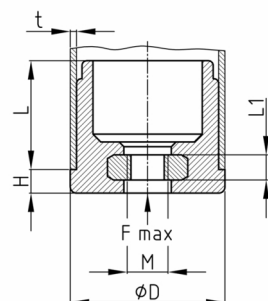


### Product Group R 40

Threaded plugs made of PA for round tubes with overmoulded steel thread

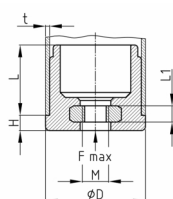


#### Standard Colours

- black

#### Material

- Base body: Polyamide (PA)
- Thread: zinc-plated steel



Order Number	D	F max.	H	L	L1	M	t
	mm	kg	mm	mm	mm		mm
R40 / 25x0,8 30 / M8	25	250	5	25	6	M8	0,8
R40 / 25x0,8 30 / M10	25	250	5	25	7,5	M10	0,8
R40 / 25x1,5 30 / M8	25	250	5	25	6	M8	1,5
R40 / 25x1,5 30 / M10	25	250	5	25	7,5	M10	1,5
R40 / 32x1,5 31,5 / M8	32	350	5	26,5	6	M8	1,5
R40 / 32x1,5 31,5 / M10	32	350	5	26,5	7,5	M10	1,5
R40 / 38x1,5 31 / M10	38	250	5	26	7,5	M10	1,5
R40 / 38x2 31 / M10	38	250	5	26	7,5	M10	2
R40 / 40x2 33 / M10	40	250	5	27	7,5	M10	2
R40 / 44x2 38,5 / M10	44	150	5	33,5	7,5	M10	2