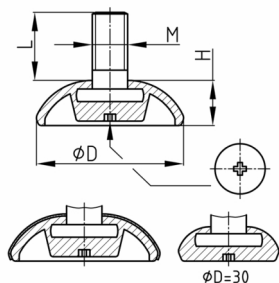


Product Group PBRB-D

Adjustable feet made of PE with nickel-coloured metal cover and galvanised threaded bolt

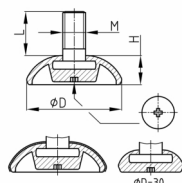


Standard Colours

- chrome-/ nickel coloured

Material

- Thread: zinc-plated steel
- Base: Polyethylene (PE)



Product information

- The feet must be adjusted unloaded.
- PBRB = M8
- PBRC = M10
- PBRD = M12, only on inquiry!

Order Number	D	H	L	M
	mm	mm	mm	
PBRB 30 / M8x20	30		20	M8
PBRC 30 / M10x20	30		20	M10
PBRB 40 / M8x20	40	12	20	M8
PBRC 40 / M10x20	40	12	20	M10
PBRC 50 / M10x20	50	13	20	M10