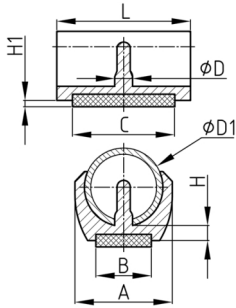


Product Group KSGH2

Clamping shell glides made of PA 6 with soft, abrasion-resistant, non-slip, noise-absorbing glide insert

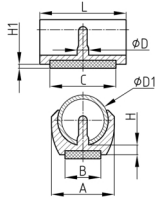


Standard Colours

- black RAL 9005

Material

- Base body: Polyamide (PA 6)
- Slide base: Polyurethane (PUR), appr. 80 Shore A
- acrylate adhesive



Order Number	A	B	C	D	D1	H	H1 ca.	L
	mm	mm	mm	mm	mm	mm	mm	mm
KSGH2 16 16-17	20	12	25	5	16-17	3,5	2	28
KSGH2 20 18-20	26,5	15	25	5,6	18-20	4	2	30
KSGH2 22 21-22	26,5	15	25	5,6	21-22	4	2	30
KSGH2 25 24-25	29,5	17	31	5,6	24-25	5	2	42