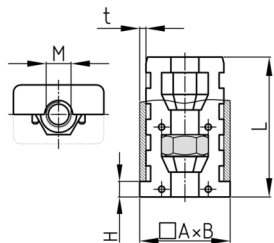


### Product Group EBRMV

Assembled expander plugs with collar made of PA for rectangular tubes with one hexagon nut (in the front)

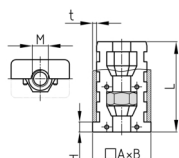


#### Standard Colours

- black

#### Material

- Base body: Polyamide (PA)
- Nut: zinc-plated steel



#### Product information

- These two-piece expander bushes with collar have conical chambers for hexagon nuts and screws. Tightening of the thread presses the outer wall of the insert against the inner tube wall (rawle plug effect). This effect requires entire tightening of the thread.
- The bushings are designed for precisely defined wall thicknesses according to the specifications in the table.
- The load capacity data refer to the use in steel tubes.
- Order-related production for individual article sizes! Please ask for minimum quantity.
- Use as threaded plugs in combination with adjustable feet or adjusting screws -> see category "Adjustment and levelling parts" - Expander effect only with fully tightened adjusting screw!
- Tube extensions (1 expander with nut and 1 expander with screw)

Order Number	A	B	H	L	M	t	F max.
	mm	mm	mm	mm		mm	kg
EBRMV 30x20x1,5 / M8	30	20	5	42	M8	1,5	300
EBRMV 40x20x1,5 / M8	40	20	5	41	M8	1,5	300
EBRMV 40x20x2 / M8	40	20	5	42	M8	2	300
EBRMV 40x30x2 / M10	40	30	5	37	M10	2	300
EBRMV 50x25x1,2-1,6 / M10	50	25	5	42	M10	1,2-1,6	300
EBRMV 50x25x1,2-1,6 / M12	50	25	5	42	M12	1,2-1,6	300
EBRMV 50x25x2 / M10	50	25	5	43	M10	2	300
EBRMV 50x30x2 / M10	50	30	5	43	M10	2	300
EBRMV 60x30x2 / M10	60	30	5	43,5	M10	2	300
EBRMV 60x30x2 / M12	60	30	5	43,5	M12	2	300