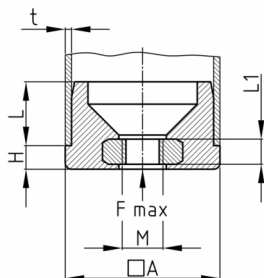


Product Group 40

Threaded plugs made of PA for square tubes with overmoulded steel thread

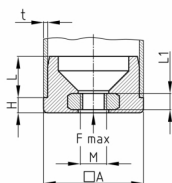


Standard Colours

- black

Material

- Base body: Polyamide (PA)
- Thread: zinc-plated steel



- Please also note the product groups Tube Connectors RVBx and Expander Bushings EBx in our article category "Fasteners".

Order Number	A	F max.	H	L	L1	M	t
	mm	kg	mm	mm	mm		mm
40 / 25x25x1,5 18,5 / M10	25	350	6	12,5	7,5	M10	1,5
40 / 25x25x2 18,5 / M10	25	350	6	12,5	7,5	M10	2
40 / 25x25x1,5 35,5 / M10	25	350	6	29,5	7,5	M10	1,5
40 / 25x25x2 34,5 / M10	25	350	6	28,5	7,5	M10	2
40 / 30x30x1,5 19 / M10	30	300	7	12	7,5	M10	1,5
40 / 30x30x1,5 37 / M10	30	600	7	30	7,5	M10	1,5
40 / 30x30x2 19 / M10	30	300	7	12	7,5	M10	2
40 / 30x30x2 36,5 / M10	30	600	7	29,5	7,5	M10	2