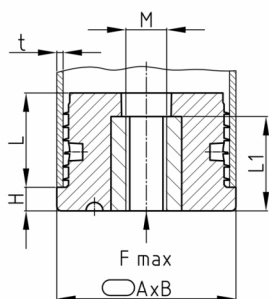


### Product Group OG

Threaded plugs made of PA for flat oval tubes with injected high nut

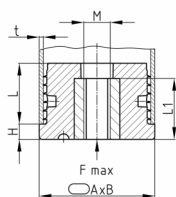


#### Standard Colours

- black RAL 9005

#### Material

- Base body: Polyamide (PA)
- Thread: zinc-plated steel



#### Product information

- The plugs are intended for use in pipes or equivalent bores with free passage corresponding to the clear nominal width of at least shaft length.
- For technical production reasons, a residual sprue may exceed the shaft length.

| Order Number            | A  | B  | F max. | H  | L    | L1 | M   | t     |
|-------------------------|----|----|--------|----|------|----|-----|-------|
|                         | mm | mm | kg     | mm | mm   | mm |     | mm    |
| OG 30x15x1 / M8x20      | 30 | 15 | 300    | 5  | 19,5 | 20 | M8  | 1     |
| OG 30x15x1,5 / M8x20    | 30 | 15 | 300    | 5  | 19,5 | 20 | M8  | 1,5   |
| OG 35x20x1,5-2 / M8x20  | 35 | 20 | 300    | 5  | 19,5 | 20 | M8  | 1,5-2 |
| OG 35x20x1,5-2 / M10x20 | 35 | 20 | 300    | 5  | 19,5 | 20 | M10 | 1,5-2 |
| OG 38x20x1,5-2 / M8x20  | 38 | 20 | 300    | 5  | 19,5 | 20 | M8  | 1,5-2 |
| OG 38x20x1,5-2 / M10x20 | 38 | 20 | 300    | 5  | 19,5 | 20 | M10 | 1,5-2 |
| OG 40x20x1,5-2 / M8x20  | 40 | 20 | 300    | 5  | 19,5 | 20 | M8  | 1,5-2 |
| OG 40x20x1,5-2 / M10x20 | 40 | 20 | 300    | 5  | 19,5 | 20 | M10 | 1,5-2 |