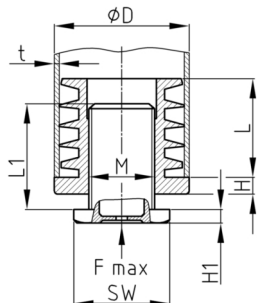


Product Group RJ

Adjusting plugs made of PA 6 for round tubes with one piece external body and injection moulded thread



Standard Colours

- black RAL 9005

Material

- Polyamide 6 (PA 6)



- The feet must be adjusted in an unloaded state.
- The specified axial, static load capacity refers to a screw turned out 10 mm and resting on the full surface.
- Adjusting plugs are not suitable as load gliders.
- Adjusting plugs are not suitable for dynamic load.

• Your searched size / design is not included? - Please ask our sales team!

- *) K = split assembled outer part
- **) = The lamella shape of the nut can be closed or interrupted
- ***) = from ϕ 60 mm supplied with mounted threaded shell
- Please observe the material hints for polyamide (PA).

Product options on inquiry

- Further sizes
- Other special productions

Order Number	D	F max.	H	H1	L	L1	M	WAF	t
	mm	kg	mm	mm	mm	mm		mm	mm
RJ 22x1,5-2/M10x25/6K	22	100	5	4	16,7	24	M10	20	1,5-2
RJ 25x1,5-2/M16x25/8k	25	150	5	5	19,7	22	M16	24	1,5-2
RJ 25x1,5-2/M16x60/8k	25	150	5	5	19,7	60	M16	24	1,5-2
RJ 30x1-1,5/M22x25/8k	30	300	5	5	19,7	29	M22	28	1-1,5
RJ 30x1-1,5/M22x60/8k	30	300	5	5	19,7	60	M22	28	1-1,5
RJ 30x1,5-2 K/M22x25/8k *	30	250	5	5	27	29	M22	28	1,5-2
RJ 30x1,5-2 K / M22x60 / 8k *	30	250	5	5	27	60	M22	28	1,5-2
RJ 32x1,5-2/M22x25/8k **	32	300	5	5	19,7	29	M22	28	1,5-2
RJ 32x1,5-2/M22x60/8k **	32	300	5	5	19,7	60	M22	28	1,5-2
RJ 35x2-2,5/M22x25/8k	35	300	5	5	29,3	29	M22	28	2-2,5
RJ 35x2-2,5/M22x60/8k	35	300	5	5	29,3	60	M22	28	2-2,5
RJ 35x1,5-2/M22x25/8k	35	300	5	5	29,3	29	M22	28	1,5-2
RJ 35x1,5-2/M22x60/8k	35	300	5	5	29,3	60	M22	28	1,5-2
RJ 38x1,5-2/M22x25/8k	38	300	5	5	29,3	29	M22	28	1,5-2
RJ 38x1,5-2/M22x60/8k	38	300	5	5	29,3	60	M22	28	1,5-2
RJ 40x2-2,5/M22x25/8k **	40	300	5	5	29,3	29	M22	28	2-2,5
RJ 40x2-2,5/M22x60/8k **	40	300	5	5	29,3	60	M22	28	2-2,5



Walter Bethke GmbH & Co. KG

Technische Kunststoff - und Hybridprodukte

Order Number	D	F max.	H	H1	L	L1	M	WAF	t
	mm	kg	mm	mm	mm	mm		mm	mm
RJ 40x1,5-2/M22x25/8k **	40	300	5	5	29,3	29	M22	28	1,5-2
RJ 40x1,5-2/M22x60/8k **	40	300	5	5	29,3	60	M22	28	1,5-2
RJ 42x1,5-2/M30x30/8k	42	300	5	5	29,3	31	M30	41	1,5-2
RJ 42x1,5-2/M30x60/8k	42	300	5	5	29,3	60	M30	41	1,5-2
RJ 45x1,5-2/M30x30/8k	45	300	5	5	29,3	31	M30	41	1,5-2
RJ 45x1,5-2/M30x60/8k	45	300	5	5	29,3	60	M30	41	1,5-2
RJ 48x1,5-2/M30x30/8k	48	300	5	5	29,3	31	M30	41	1,5-2
RJ 48x1,5-2/M30x60/8k	48	300	5	5	29,3	60	M30	41	1,5-2
RJ 50,8x1,2-2/M30x30/8k	50,8	300	5	5	29,3	31	M30	41	1,2-2
RJ 50,8x1,2-2/M30x60/8k	50,8	300	5	5	29,3	60	M30	41	1,2-2
RJ 50x2-2,5/M30x30/8k	50	300	5	5	29,3	31	M30	41	2-2,5
RJ 50x2-2,5/M30x60/8k	50	300	5	5	29,3	60	M30	41	2-2,5
RJ 50x1,5-2/M30x30/8k	50	300	5	5	29,3	31	M30	41	1,5-2
RJ 50x1,5-2/M30x60/8k	50	300	5	5	29,3	60	M30	41	1,5-2
RJ 60x1,5-2/S42x2x40/12k ***	60	300	6	10	34,7	40	S42x2	58	1,5-2
RJ 60x1,5-2/S42x2x80/12k ***	60	300	6	10	34,7	80	S42x2	58	1,5-2
RJ 80x1,5-2/S56x2x40/12k ***	80	300	6	10	34,7	40	S56x2	74	1,5-2
RJ 80x1,5-2/S56x2x80/12k ***	80	300	6	10	34,7	80	S56x2	74	1,5-2