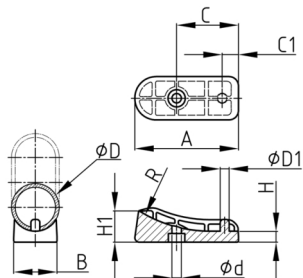


### Product Group SGRXT

Shell glides made of transparent and abrasion-resistant PVC-P for tube-based cantilever and skid-base chairs

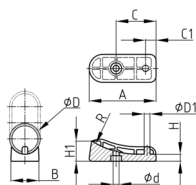


#### Standard Colours

- uncoloured

#### Material

- Plasticised PVC (PVC-P), app. 92 Shore A



- Safe positioning and fixing via two frame bores - only one connecting element required.

Order Number	A	B	C	C1	d	D	D1	H	H1 ca.	R
	mm	mm	mm	mm	mm	mm	mm	mm	mm	mm
SGRXT 25/60 R 63,5	60	22	35	9	5,2	25	5,7	7	21	63,5
SGRXT 25/60 R 75	60	22	35	9	5,2	25	5,7	7	21	75
SGRXT 30/64 R 80	65	27,5	39	9,5	5,9	30	5,5	7	20	80
SGRXT 30/64 R 85	65	27,5	39	9,5	5,9	30	5,5	7	19,5	85