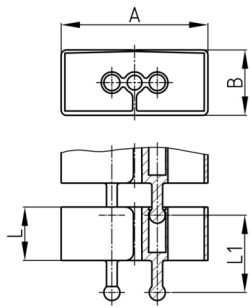


Product Group KBKCMX

Rectangular cable chain made of PP for horizontal and vertical cable ducting

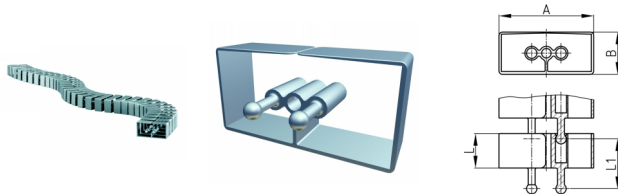


Standard Colours

- black
- white
- uncoloured-translucent
- silver

Material

- Polypropylene (PP)



Product information

- Flexible cable ducting system for horizontal and vertical cable ducting.
- Any assembly possibilities with fixing elements "KBKCMXZ1" or "KBKZ8S".
-
- The chain links arranged displaceable to each other.
- 2 connectors for optimal force transmission, especially torque, pressure- and transverse forces
- Two-chamber-system for separating data and power lines
- Laying as a closed cable chain channel via blocking the chain.
- Closed centre channel to accommodate mounting rope "KBKZ2A" or hauling rope "KBKZ2B".
- The pushed together, rigid installation of the cable guide chain is conditionally suitable for low-traffic passage areas.
- Tool-free connection to all standard floor outlets by using "KBKZ10L / Clip-L Floor (PRO+CUB+CMX)".
- Tool-free and time saving installation of cables by zipper principle.
- Optimized possibility for lateral squeeze-proof unthreading of the cables.
- 2D/3D-free movable and ca. 35 % flexible in length
- Tool-free branching through distributors
- Compatible with cable chain "KBKCUB", "KBKPRO", "KBKCL" and "KBKFLII" (intermateable).
- Extensive range of adapters
- Length of the cable chain: approx. 100 cm when pulled apart, approx. 69 cm when compressed

Order Number	A	B	L	L1	Element(s)	For up to x cable
	mm	mm	mm	mm	piece(s)	piece(s)
KBKCMX 60x100 cm	60	18	20		34	15
KBKCMX 100 cm	70	35	20	29	34	40