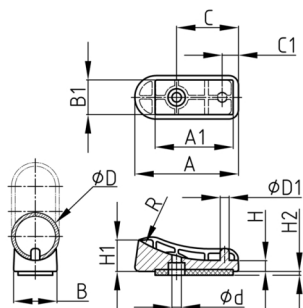


Product Group SGRXH

Shell glides made of PA with different blending radii and with abraision-resistant, non-slip insert for tube-based cantilever and skid-base chairs



Standard Colours

- black RAL 9005

Material

- Base body: Polyamide (PA 6)
- Slide base: Polyurethane (PUR), appr. 80 Shore A
- acrylate adhesive



- Safe positioning and fixing via two frame bores - only one connecting element required.

| Order Number | A | B | A1 | B1 | C | C1 | d | D | D1 | H | H1 ca. | H2 | R |
|-------------------|----|------|------|------|----|-----|----|----|-----|----|--------|-----|------|
| | mm | mm | mm | mm | mm | mm | mm | mm | mm | mm | mm | mm | mm |
| SGRXH 25/60 R63,5 | 60 | 22 | 44,5 | 15 | 35 | 9 | 6 | 25 | 5,7 | 7 | 21,5 | 2,5 | 63,5 |
| SGRXH 25/60 R75 | 60 | 22 | 44,5 | 15 | 35 | 9 | 6 | 25 | 5,7 | 7 | 20 | 2,5 | 75 |
| SGRXH 30/64 R80 | 65 | 27,5 | 48 | 20,5 | 39 | 9,5 | 6 | 30 | 5,6 | 7 | 20 | 2,5 | 80 |
| SGRXH 30/64 R85 | 65 | 27,5 | 48 | 20,5 | 39 | 9,5 | 6 | 30 | 5,6 | 7 | 19,5 | 2,5 | 85 |